

March 3, 2020
Volume 64, Issue 5

PHILIP-EYE

Rev. Dr. John W. Wurster
Pastor, Head of Staff

Rev. Keatan King
Associate Pastor

Rev. Omar Rouchon
Associate Pastor

Rev. Dr. Samuel Lanham III
Pastor Emeritus

Dr. Randall Swanson
Director of Music

Dr. Matthew Dirst
Organist

Cecy Duarte
Children's Music Associate

Micah Meyers
Art Director

Denise Ferrell
Bookkeeper

Wilbert Parada
Facilities Supervisor

Dimas Parada
Custodian

Lorrie Castle
Office Manager
Newsletter Editor

Susan Estill
Editor Emerita

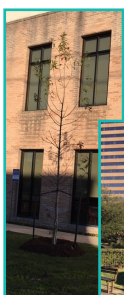
THE OLD WILLOW OAK HAS BEEN GONE TOO LONG

The old oak was dying, wired together to keep it from self-destruction. In December 2014 the time came to let it go, and with sadness, St. Philip said good-bye to the giant. For some of us, the huge willow oak was much like the Ents in Tolkien's Lord of the Rings -- a tree and yet a friend.

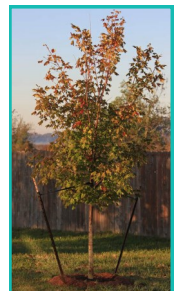
Recognizing the value of trees in our urban environment, energetic Property Committee members, Ginny Camfield, Jack Fox and Dan Cleveland, aided by landscaping professionals Mark McKinnon and Heidi Sheesely of Treesearch Farms, dedicated their time and talent to selecting new trees for our campus. We hope these new friends will provide shade and beauty for our campus for many years.



Leading the way and placed strategically across the front Sanctuary area, are three Chinese Fringe Trees. These are fast-growing ornamental trees with attractive glossy dark green oval foliage that turns bright yellow in the fall and displays of incredible fringy white flowers in springtime, taking on the appearance of a thick white cloud from a distance. This Ent has wonderfully sculptured trunks and by late summer is covered with clusters of attractive dark blue fruit for wildlife.



Next in the lineup of new tree friends is the Mexican Sugar Maple. It has very large leaves, and perhaps the biggest samaras, or winged nuts, found in the Aceraceae family. Also known as the Skutch Maple it grows quickly, has vibrant fall and spring foliage colors, tolerates drought and adapts well to well-drained sunny locations. We've planted two: one located in the front area of the Playground and the other on the grassy island parking area behind the Education Building.



We've also planted a Nuttall Oak in the Playground area. Similar to the pin oak, this is an outstanding shade tree, with good fall color ranging from yellow

cont'd



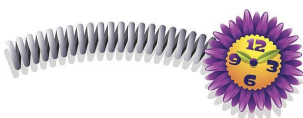
to red. We expect it to be a long-lived tree, tolerant of soil extremes, and a provider of acorns for wildlife. With an oval-to-round canopy with upward ascending branches and horizontal lowers, the Nuttall Oak will make a fine addition to the children's playground where an old and very tall Yellow Pine once resided.

We hope you take some time to look at these new additions to our campus and make some new tree friends!

KIDS AGAINST HUNGER

Kids Against Hunger is in need of volunteers immediately on March 7 **beginning at 10 a.m.** in the Dining Room and will conclude **at noon**.

There will be spots for the first 15 who sign up. Anyone who is available should email Butch at butchwilson97@gmail.com.



DAYLIGHT SAVINGS TIME BEGINS Sunday, March 8, 2020. Don't forget to set the clocks you actually have

to set, AHEAD one hour on Saturday.

DUERR LECTURE SERIES RECORDINGS

After a very successful and exciting lecture series with speaker Rev. Dr. Deborah L. Forger, Ph.D., a number of people are asking about the recordings. The recordings will be available soon. Please watch the bulletin, website and next newsletter for details on how to order. You will have your choice of ordering the set of 4 CDs - \$15.00 (add \$7 if you wish to receive by mail); or ordering the MP3 downloadable files - \$10. CDs and MP3 files will be ready in a few weeks. When ready you will receive an email either to pick up your CDs in the Church Office or with a link to download your files.

BRIDGE

The bridge group at St. Philip is looking for new, regular, or substitute players. If you like to play bridge, we would welcome having you play with us on the third Wednesday of the month. For more information or to sign up, call or email Mary Waggoner (346-571-2288) jim.mary.wagg@oplink.net.

CAMPUS TOUR

If you have ever wondered where something is at the church, now is the time to find out! **March 8**, at 9:30 a.m. will be the date for the next facilities tour of St. Philip conducted by the Welcome and Membership committee. The committee will give a walking tour of the various spaces, artwork and the community garden. In addition, there will be brief talks by two committee chairmen of their committee's functions and programs. All interested visitors and members are encouraged to attend. The tour will start in the Gathering Area and there will be refreshments.

WELCOME NEW MEMBER

On February 16 Session welcomed a new member to St. Philip. Please introduce yourself and make him feel welcome.

Paul Jackson

Paul joins St. Philip by letter of transfer from Clinton Presbyterian Church in Clinton, Louisiana. He has recently moved to the Houston area and he has previously been ordained as an Elder. Paul had heard about our wonderful church from member Sara Jean Jackson, who is also his sister. He is a retired physician with three adult children. Paul grew up in Clinton, LA and graduated from the University of Tennessee Medical School in Memphis, Tennessee. He lists his favorite pastime as reading. At St. Philip Paul is interested in being involved with Education, Welcome and Membership, Stewardship, Fellowship, and Peacemaking and Social Justice.



VOLUNTEER AS A USHER

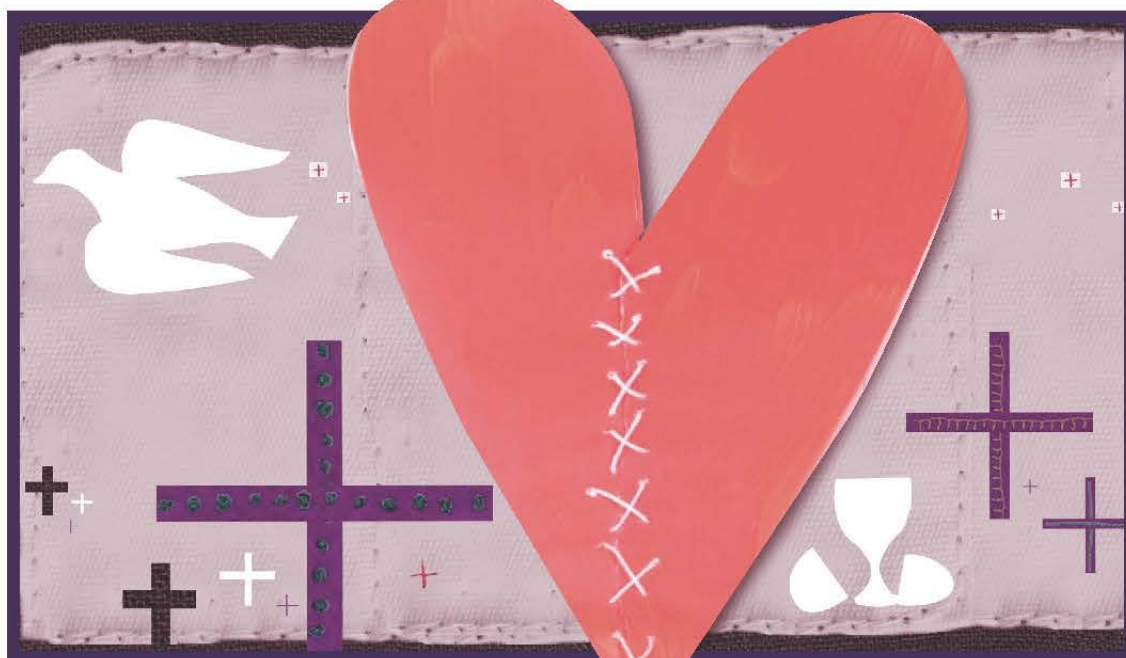
The Worship and Music Committee needs your help in staffing the ministry of ushering. What better time to jump in than at the beginning of a new year! Please choose a Sunday or Sundays and commit to serve the Lord in this way. It is an easy task especially when shared with others. Bless someone's Sunday worship experience with a smile and a warm welcome. You will be blessed as well. You can email William Howard at William.v.howard@exxonmobil.com to help with ushering.

LENT AT ST. PHILIP

This week's preacher for Wednesday Worship is Rose Niles from Austin Seminary. All the preachers in this year's series are offering sermons on broken hearts being mended.



Throughout Lent, we are placing the prayers of our hearts on the chancel tree. The paper hearts in the pews may be used to record your prayers. Hearts may be placed in the offering plate or brought to the communion table at the end of the service. They will be added to the tree during the week. There's still time to join the mailing list for e-votions. For each of the forty days of Lent, John Wurster is preparing brief biblical reflections and distributing them via e-mail. You can subscribe to e-votions by sending a note to john@saintphilip.net.



LENT AT ST. PHILIP

WEDNESDAY WORSHIP

~ SERVICES ~

MARCH 4, 11, 18 & 25 | APRIL 1
12 NOON

[LUNCH AVAILABLE AT 12:30]

SERMONS ON

BROKEN HEARTS BEING MENDED

PRAYERS OF THE PEOPLE



ADDING THE PRAYERS OF OUR HEARTS TO THE SANCTUARY PRAYER TREE
THROUGHOUT LENT.



E-VOTIONS
E-MAILED DAILY

Family **LENT**
DEVOTIONAL



VISIT THE WEBSITE FOR MORE DETAILS: SaintPhilip.net

WEEKDAY CLASSES

WEEKLY BIBLE STUDY

John Wurster is leading a Bible study series focused on ten biblical characters, who come from all corners of Scripture. Some are famous, some are infamous, some are hardly known, and most all are misunderstood. The *10 for 20* study meets Wednesday mornings at 10:30 in the Dining Room AND Sunday mornings at 9:45 in Room 202. The material in Wednesday class will be repeated on Sunday. You are welcome to come either Wednesday or Sunday, as your schedule allows.

WOMEN'S MONTHLY BOOK GROUP

A monthly interest group for women who like to read books, socialize, and have a night out meets on the second Thursday of each month at 7:00 p.m. Our next meeting is **March 12**, at the home of Nina Lambright. We will be discussing *The President is Missing* by James Patterson and Bill Clinton. This self-led, interactive group produces lively discussions and wonderful fellowship. For more information contact Sarah O'Dell at: sarah.odell6@gmail.com.

PRESBYTERIAN MEN'S WEEKLY FELLOWSHIP

Men of all ages are welcome to participate in this self-led group. We continue our look at the book *Lent in Plain Sight* by Jill J. Duffield. Weekly Fellowship meets each Friday in the Conference Room at noon. Men who wish to participate should bring a bag lunch; refreshments will be provided. The group wraps up promptly at 1:00 p.m. Please contact Gary Gardner at ggardne148@aol.com if you have any questions and would like to join them.

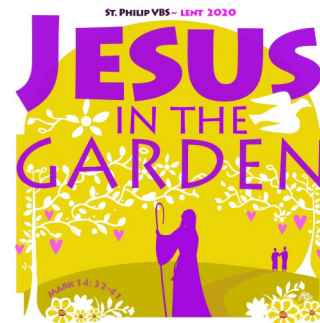
MONDAY EVENING STUDY GROUP

On **March 9**, we continue our discussion of Marcus Borg's book *The Heart of Christianity: Rediscovering a Life of Faith*, with chapter 10, "The heart of the matter: Practice," in part 2, "Seeing the Christian life again." We meet for fellowship, a brief devotional, and study each second and fourth Monday, from 5:30 to 7 p.m., in the Dining Room (in the Administration Building, at the south end of campus).

PUB CLUB

Pub Club is a group for men in the church who like to enjoy fellowship,

stories and spirited discussion once a month at a local pub. Pub Club returns the fourth Tuesday of each month at 7:00 p.m. Our next meeting will be **March 24** at Griff's, 3416 Roseland St., 77006. Men interested in attending may eat beforehand or order food from the pub. For more information or questions, please contact Tim Burgess at TimRB1987@gmail.com.



LENT VBS

Parents, mark your calendars for Lent VBS on Saturday, **March 28**. Registration will be available online by the end of the week. If you would like to volunteer, contact Omar Rouchon at omar@saintphilip.net.

IN OUR PRAYERS

Paul Arlinghaus and family upon the death of his father Ralph Arlinghaus on February 28. Memorial service will be March 6 at 11 a.m. at St. Philip.

Mary Linda Williams and family upon the death of her husband Paxton Williams on February 8. Memorial service will be March 7 at 11 a.m. at St. Philip.

Rachel Kimbro and family upon the death of her grandmother Bobbie Hesterly in Arkansas.

St. Philippians and their families—Pat Lindsay; Greg Moore; Jim Barrish; Patrick Ball; Marion Takehara; CJ Miller; Rita Hannah; Lonnie Fugit; Mezgebe Gebray; John Bobbitt; Arlette Keene; Barbara Wilson—sister-in-law of Connie Mayfield; Jack Kindig—brother of Ginny Camfield; Shirley and Weldon Boggus, Sr.—grandparents of Omi Ford; Jimmy Reagan—father of Sarah O'Dell; Dona Rowe—mother of William Rowe; Elizabeth Carlton Lithio—granddaughter of Jeanie Flowers; and Ann Morgan—sister of Dorothy Blackwell.

Homebound: Sue Baier; Walter Baker; Joe Anne Berwick; Paulie Carlson; Kitty Curry; Jane English; Barbara German; George Helland; Donna Host; T.E. "Joe" Keever; Toto McGehee; Phillip McDaniel; Paul & Alice Pennington; Joyce Randolph; Van Rathgeber; Virginia McFarland; Jean Nelson; Jody Tomforde; Penny Vieau; and Ruth Weber.

Friends of St. Philippians: Ed Scala—friend of Peg Palisin and Gary Gardner; Shirley Stubblefield—friend of Barbara Runge; Leland Daniel—friend of Jane Cooper; Frank Wallace—friend of Jim & Nadene Crain; Willie Jo Schaefer—friend of Pam Rush; and Walter "Buddy" Hammann III—friend of Robin & Gary Willis.

SUNDAY SCHOOL CLASSES

Classes begin at 9:45.

Godly Play (Age 3 to K)—Room 104 - *Omi Ford, Joyce Fox, and Ruthie Waldrop*

Grades 1—2 - Room 105 - for the first four weeks - *Kara D'Agostino and Paul D'Agostino*

Grades 3—5 - Room 103 - *Paul Arlinghaus and Linda Bevil*

Grades 6—8 - Room 206 - *Charles Swan*

Grades 9-12 - Room 205 - *Keatan King and John Lemen*

CHURCH & SOCIETY

Room 201 - Leaders Mickey Meyers & C J Miller—**March 8** - Restorative Justice - Bridges to Life - Changing People's lives, Healing Crime Victims, Rehabilitating Offenders, Making our Communities Safer - Bridges to Life is a faith-based restorative justice program for incarcerated men and women that provides a platform for life-changing transformation. The mission of Bridges to Life is to connect communities to prisons to reduce the recidivism rate, reduce the number of crime victims, and enhance public

safety; to minister to victims and offenders in an effort to show them the transforming power of God's love and forgiveness. Presented by Gay and John Van Osdall, who lost their daughter to a terrible crime in 2000. **March 15** - Gun Safety Issues - Protecting the health and safety of citizens through limiting the accessibility and regulating the ownership of handguns and semi-automatic weapons. - Presented by Aimee Turney - City of Houston Mayor's Commission Against Gun Violence, Gun Safety Chair for League of Women Voters, and Moms Demand Action.

BIBLE STUDY

Room 204 - Al Waldrop, leader. We are studying the Psalms, primarily from the NRSV and Dr. Robert Alter's *The Book of Psalms: A Translation with Commentary*.

SPA

Room 200 - SPa will be merging with the *10 for 20* class that John Wurster is teaching on Sundays for the next few weeks in Room 202. The Saint Philip Adults class is a fellowship of adults from all walks of life who gather for learning and community. It is an interactive/ conversation/

dialogue-based class. Sharing leadership is easy and fun and asking questions is what it is all about. Contact: Omar@saintphilip.net.

CHILDREN'S CHAPEL

February 23—Children in pre-K through first grade are invited to attend Children's Chapel with Rev. Omar Rouchon and a parent helper following the conversation with children during the 11 o'clock service on the second and fourth Sundays. In the Children's Chapel, our young disciples learn the whos, whats, wheres, whens and whys of worship, while praying, singing and hearing God's word at an age-appropriate level. Children return to join the congregation in the first few pews on the lectern side of the church for the last hymn.

10 FOR 20

Room 202—John Wurster, leader. See description of Midweek Bible Study class.

Next edition: March 17

If you have any comments or suggestions for the Philip-Eye, please send them to:

philipeye@saintphilip.net or call 713-622-4807 and ask for Lorrie.



MORE LIGHT
PRESBYTERIANS



4807 San Felipe, Houston, TX 77056

Phone: 713.622.4807 Fax: 713.622.5405 www.saintphilip.net